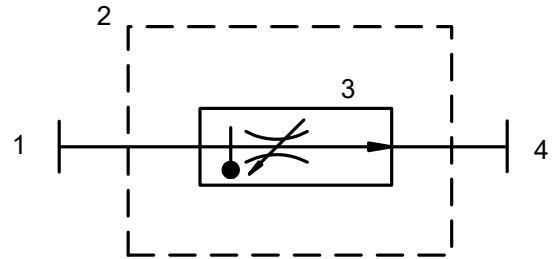


FLOW CONTROL MANIFOLD

PDT Model 5460



- 1. Inlet Fitting
- 2. Manifold
- 3. Flow Control Valve
- 4. Outlet Fitting

Hydraulic Schematic

Description

PDT Model 5460 Flow Control Valve (FVC) is a passive device used to control fluid flow in various portions of systems. The inner workings allow for flow

control over wide temperature ranges as compared to a fixed orifice. The FCV is designed to withstand various

MIL-STD-810 and RTCA-DO-160 conditions.

Specification

Valve Parameters

Fluid:	Polyalphaolefin (PAO) per MIL-PRF-87252
Flow:	Valve shall maintain flow rate at 5.0 gpm +20%/-0% when supplied flow is greater than 5 gpm and available pressure drop across manifold ranges from 20 psid To 70 psid
Temperature:	Operating: -55°C to +70°C Non-operating: -55°C to +85°C
Pressure:	Operating: 250 psig Proof: 375 psig Burst: 500 psig
Dry Weight:	2.0 lbs (max dry)
Finish:	Aluminum surfaces anodized per MIL-A-8625F Type II. Mounting interface finished per MIL-C-5541 Class 3
Electrical:	None

PACIFIC DESIGN TECHNOLOGIES, INC.

6300 Lindmar Drive, Goleta, CA 93117
Tel: (805) 961-9110
Fax: (805) 961-9120
www.pd-tech.com



**AS9100
CERTIFIED QUALITY
MANAGEMENT
SYSTEM**

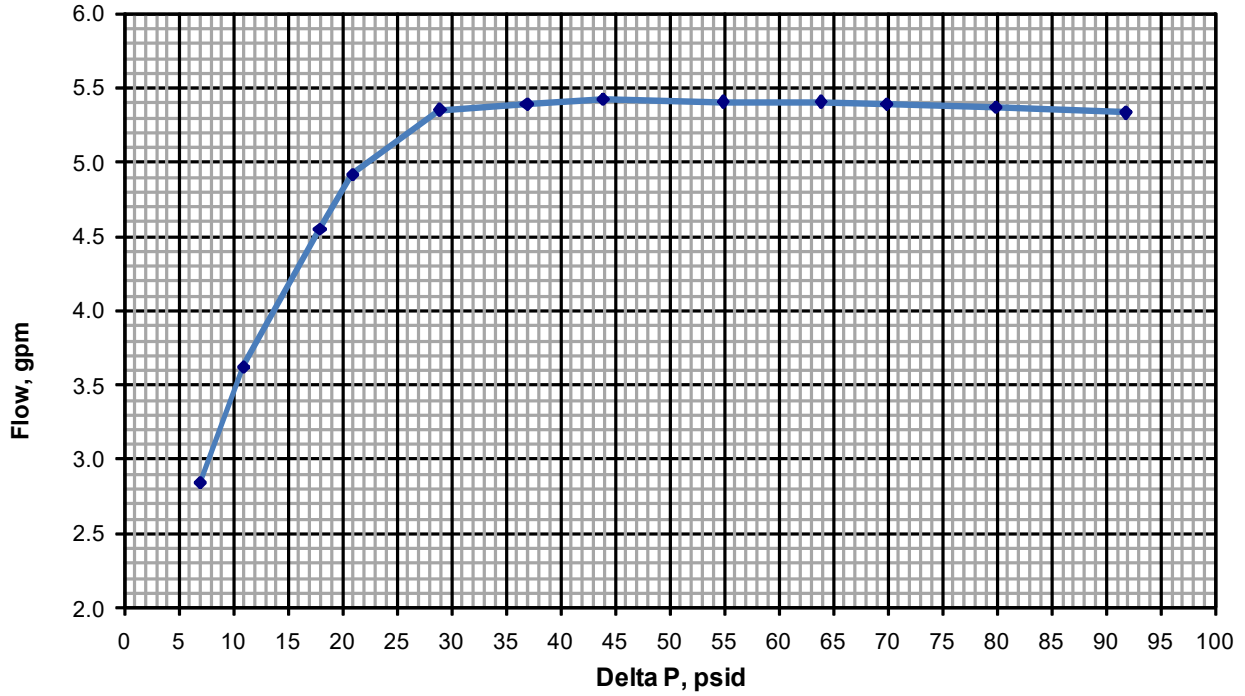
PDT Model 5460

Our people are part of our product.

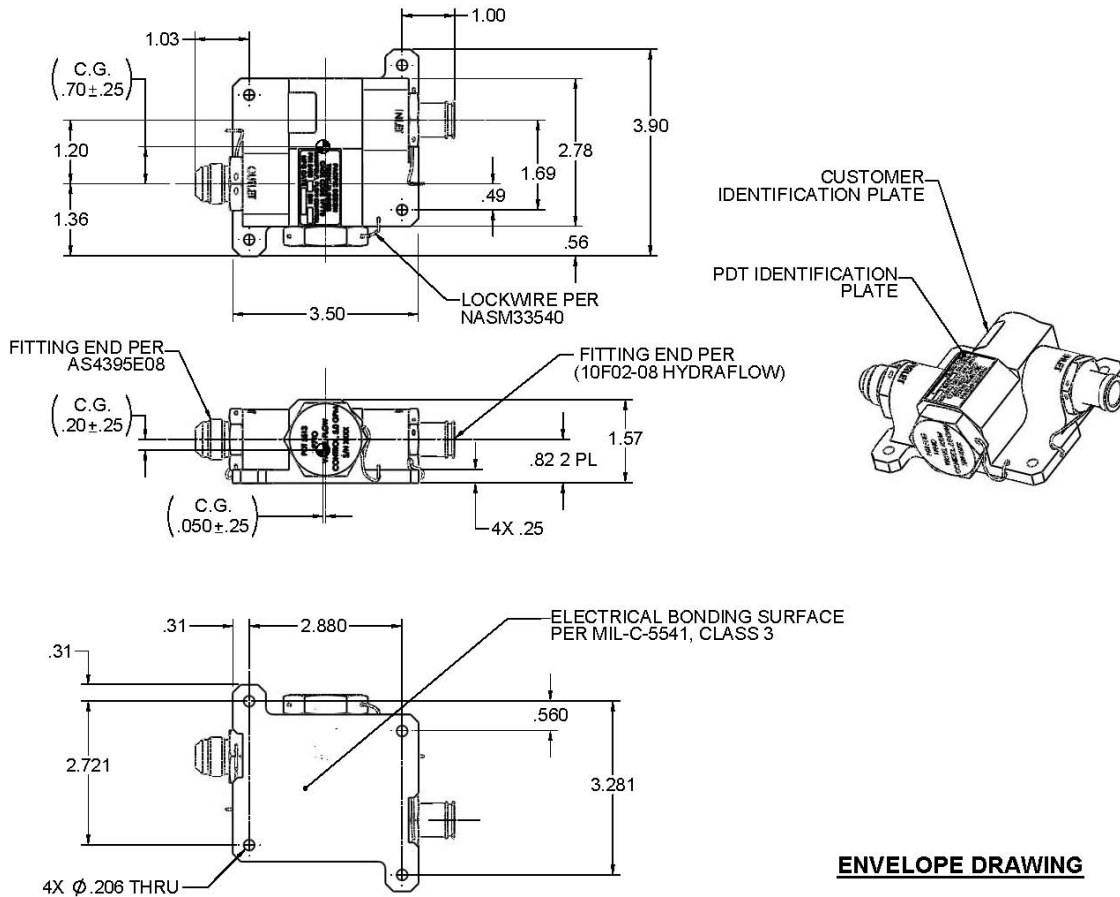
FLOW CONTROL MANIFOLD

PDT Model 5460

Performance Graph



Dimensions



PACIFIC DESIGN TECHNOLOGIES, INC.
6300 Lindmar Drive, Goleta, CA 93117
Tel: (805) 961-9110
Fax: (805) 961-9120
www.pd-tech.com

AMETEK[®]
AEROSPACE & DEFENSE
THERMAL MANAGEMENT SYSTEMS

AS9100
CERTIFIED QUALITY
MANAGEMENT
SYSTEM

PDT Model 5460

Our people are part of our product.