

FUEL PUMP



PDT Model 5061-2



PDT Model 5152-3

Description

The PDT Model 5061-2 and 5152-3 fuel metering pumps provide variable fuel flow rates suitable for today's class of micro-turbine engines. The integral motor controller can provide a pump speed control range of 20:1. This eliminates the need for a separate fuel flow

control system. The surface mount technology utilized within the controller processes the analog input drive signal to regulate the motor speed. The motor is direct coupled to the positive pump resulting in the capability of a 20:1 flow range. A variety of pump heads and

speed control interface circuits are available. The micro turbine engine is part of the propulsion system for a family of robotic munitions intended for use by the United States military.

Specifications

PDT Model 5061-2

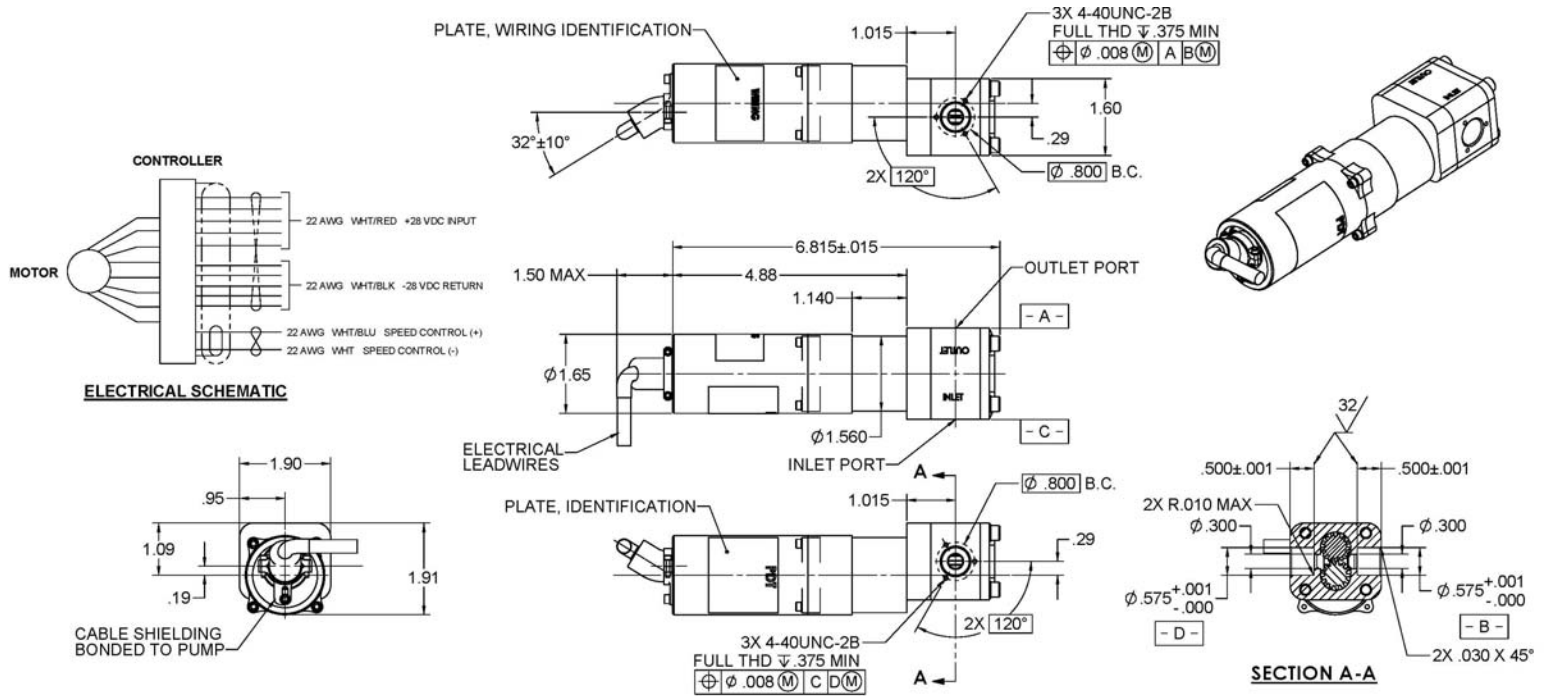
Fluid:	JP-10 per MIL-P-87107
Flowrate (Variable):	5 pph (.01 gpm) @ 5 psid to 50 pph (.11 gpm) @ 90 psid;
Rated Conditions:	+70°F ± 10°F (S.G.=.935)
Operating Temperature:	-65°F to 185°F
Inlet Pressure:	3.5 to 15 psia
Input Power:	28vdc
Speed Control Input:	0-10vdc
Dry Weight:	0.5 lbs. (max)

PDT Model 5152-3

Fluid:	JP-10 per MIL-P-87107
Flowrate (Variable):	20 pph (.04gpm) @ 5 psid to 340 pph (.68gpm) @ 300 psid
Rated Conditions:	80°F ± 5°F, (S.G. = 0.93)
Operating Temperature:	-60°F to 165°F
Inlet Pressure:	9.7 psia to 10 psig
Input Power:	28 vdc / 11 amps at max flowrate
Speed Control Input:	0.7 - 12 vdc
Dry Weight:	2.2 lbs. max

FUEL PUMP

PDT Model 5152-3 Outline



PDT Model 5061-2 Outline

